

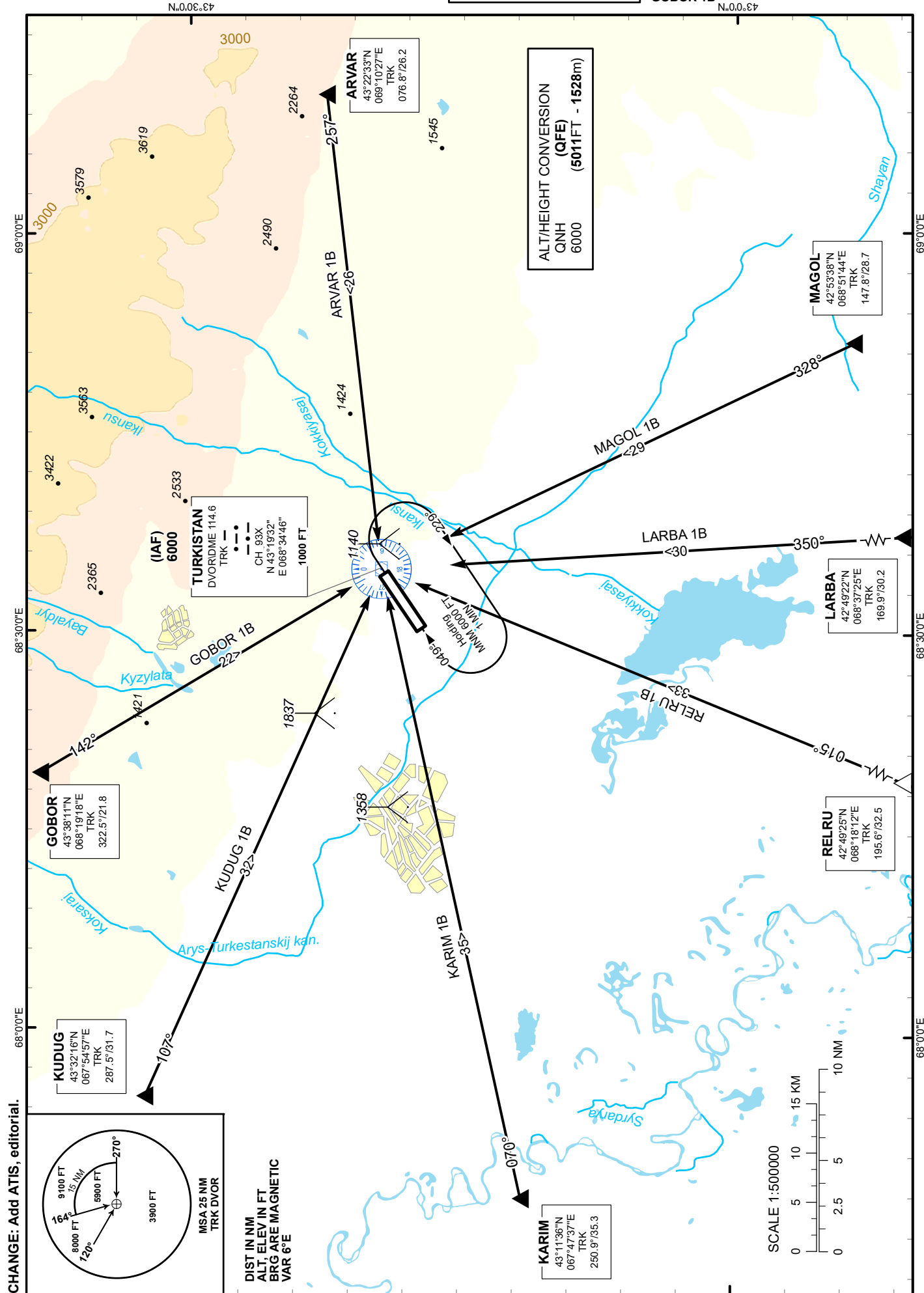
STANDARD ARRIVAL CHART
INSTRUMENT (STAR) - ICAO

TRANSITION ALTITUDE
10000 FT

TURKISTAN TOWER 131.3
TURKISTAN ATIS (EN) 124.4
TURKISTAN ATIS (RU) 118.3

ARVAR 1B, MAGOL 1B,
LARBA 1B, RELRU 1B,
KARIM 1B, KUDUG 1B,
GOBOR 1B

TURKISTAN
RWY 23



STANDARD ARRIVAL ROUTES – INSTRUMENT (STAR) TURKISTAN RWY 23
ARVAR 1B After crossing ARVAR (R076.8° D26.2 TRK) proceed on track 257° to TRK. Cross ARVAR at 7000 or above. Cross TRK at 6000.
MAGOL 1B After crossing MAGOL (R147.8° D28.7 TRK) proceed on track 328° to TRK. Cross MAGOL at 7000 or above. Cross TRK at 6000.
LARBA 1B After crossing LARBA (R169.9° D30.2 TRK) proceed on track 350° to TRK. Cross LARBA at 7000 or above. Cross TRK at 6000.
RELRU 1B After crossing RELRU (R195.6° D32.5 TRK) proceed on track 015° to TRK. Cross RELRU at 7000 or above. Cross TRK at 6000.
KARIM 1B After crossing KARIM (R250.9° D35.3 TRK) proceed on track 070° to TRK. Cross KARIM at 7000 or above. Cross TRK at 6000.
KUDUG 1B After crossing KUDUG (R287.5° D31.7 TRK) proceed on track 107° to TRK. Cross KUDUG at 7000 or above. Cross TRK at 6000.
GOBOR 1B After crossing GOBOR (R322.5° D21.8 TRK) proceed on track 142° to TRK. Cross GOBOR at 9000 or above. Cross TRK at 6000.